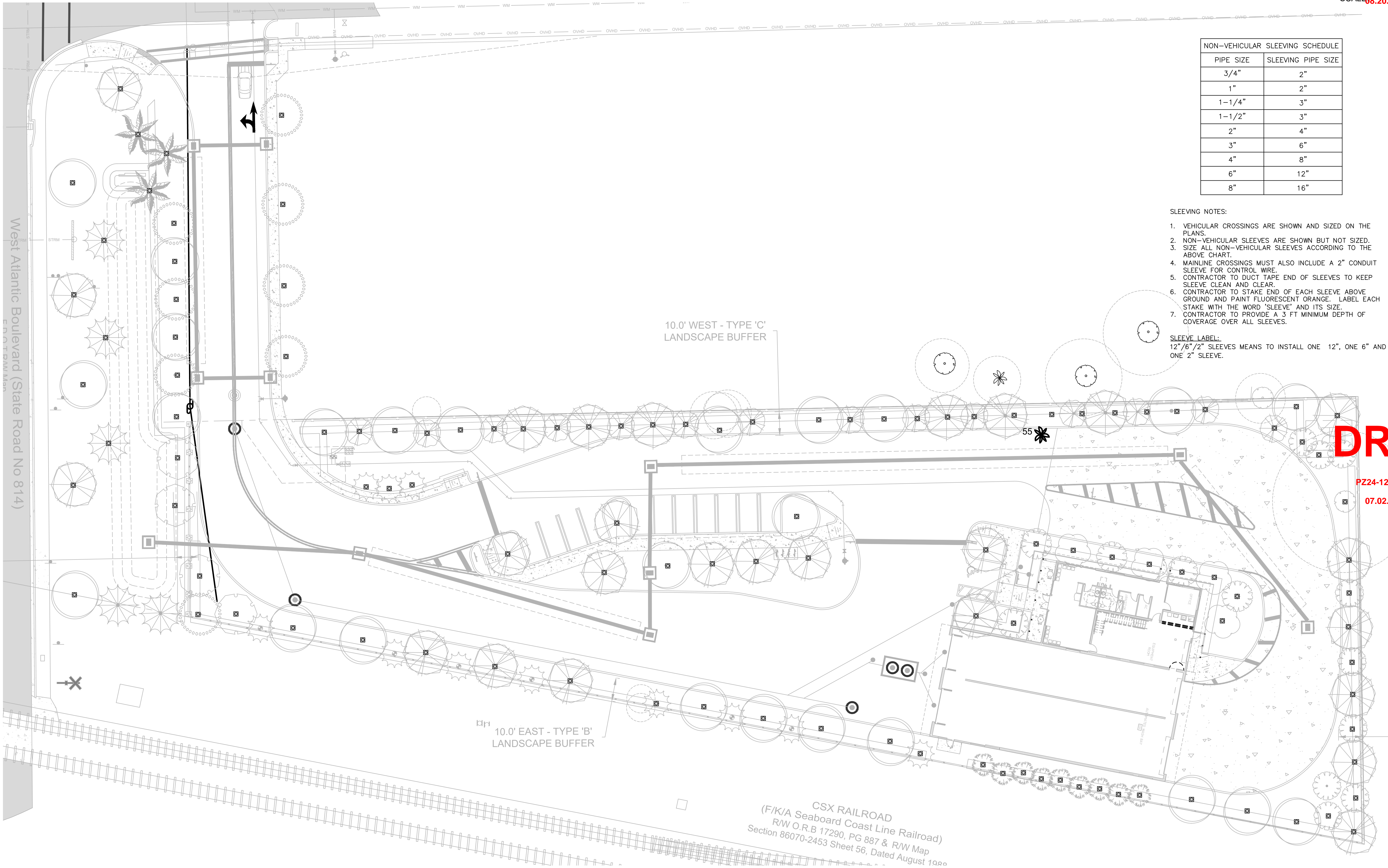


X:\Project Files Florida and Caribbean\Craven Thompson & Associates (CTA)\1501 W Atlantic\_CTA-24781 (Atlantic Truck Wash)\Design\2025\_0430 50% UPDATE\2025\_0224\_24-0055-IRR 50%.dwg [R-3] May 27, 2025 12:47pm TP/PHILLIPS



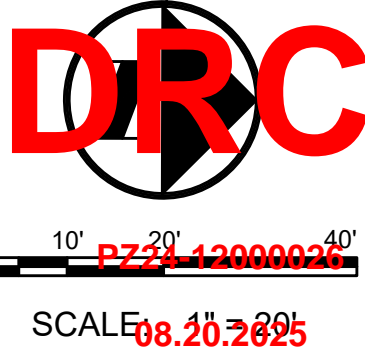
NON-VEHICULAR SLEEVING SCHEDULE	
PIPE SIZE	SLEEVING PIPE SIZE
3/4"	2"
1"	2"
1-1/4"	3"
1-1/2"	3"
2"	4"
3"	6"
4"	8"
6"	12"
8"	16"

SLEEVING NOTES:

1. VEHICULAR CROSSINGS ARE SHOWN AND SIZED ON THE PLANS.
2. NON-VEHICULAR SLEEVES ARE SHOWN BUT NOT SIZED.
3. SIZE ALL NON-VEHICULAR SLEEVES ACCORDING TO THE ABOVE CHART.
4. MAINLINE CROSSINGS MUST ALSO INCLUDE A 2" CONDUIT SLEEVE FOR CONTROL WIRE.
5. CONTRACTOR TO DUCT TAPE END OF SLEEVES TO KEEP SLEEVE CLEAN AND CLEAR.
6. CONTRACTOR TO STAKE END OF EACH SLEEVE ABOVE GROUND AND PAINT FLUORESCENT ORANGE. LABEL EACH STAKE WITH THE WORD 'SLEEVE' AND ITS SIZE.
7. CONTRACTOR TO PROVIDE A 3 FT MINIMUM DEPTH OF COVERAGE OVER ALL SLEEVES.

SLEEVE LABEL:

12"/6"/2" SLEEVES MEANS TO INSTALL ONE 12", ONE 6" AND ONE 2" SLEEVE.



CRAVEN • THOMPSON AND ASSOCIATES, INC.  
ENGINEERS • PLANNERS • SURVEYORS  
3563 N.W. 53RD STREET, FORT LAUDERDALE, FLORIDA 33309  
TEL: (954) 739-6409  
FAX: (954) 739-6409  
FLORIDA LICENSED ENGINEERS, SURVEYORS & PLANNERS BUSINESS NO. 271  
FLORIDA LICENSED LANDSCAPE ARCHITECTURE BUSINESS NO. C000114  
MATERIAL SHOWN HEREIN IS THE PROPERTY OF CRAVEN THOMPSON & ASSOCIATES, INC. AND SHALL NOT BE REPRODUCED OR TRANSMITTED IN ANY FORM OR BY ANY MEANS, ELECTRONIC OR MECHANICAL, INCLUDING PHOTOCOPYING, RECORDING, OR BY ANY INFORMATION STORAGE AND RETRIEVAL SYSTEM, WITHOUT PERMISSION IN WRITING FROM CRAVEN THOMPSON & ASSOCIATES, INC. COPYRIGHT © 2025

ATLANTIC FLEET WASH  
1501 WEST ATLANTIC BLVD.  
POMPANO BEACH, FLORIDA

PREPARED FOR:  
KAJA PROPERTIES INC.

IRRIGATION PLAN - TREE BUBBLERS

Nicole D. Pastre  
Florida R.L.A. No. 6667397  
2025-05-27

PROJECT NO.  
24-0055-001-01

IR-3  
SHEET 3 OF 6